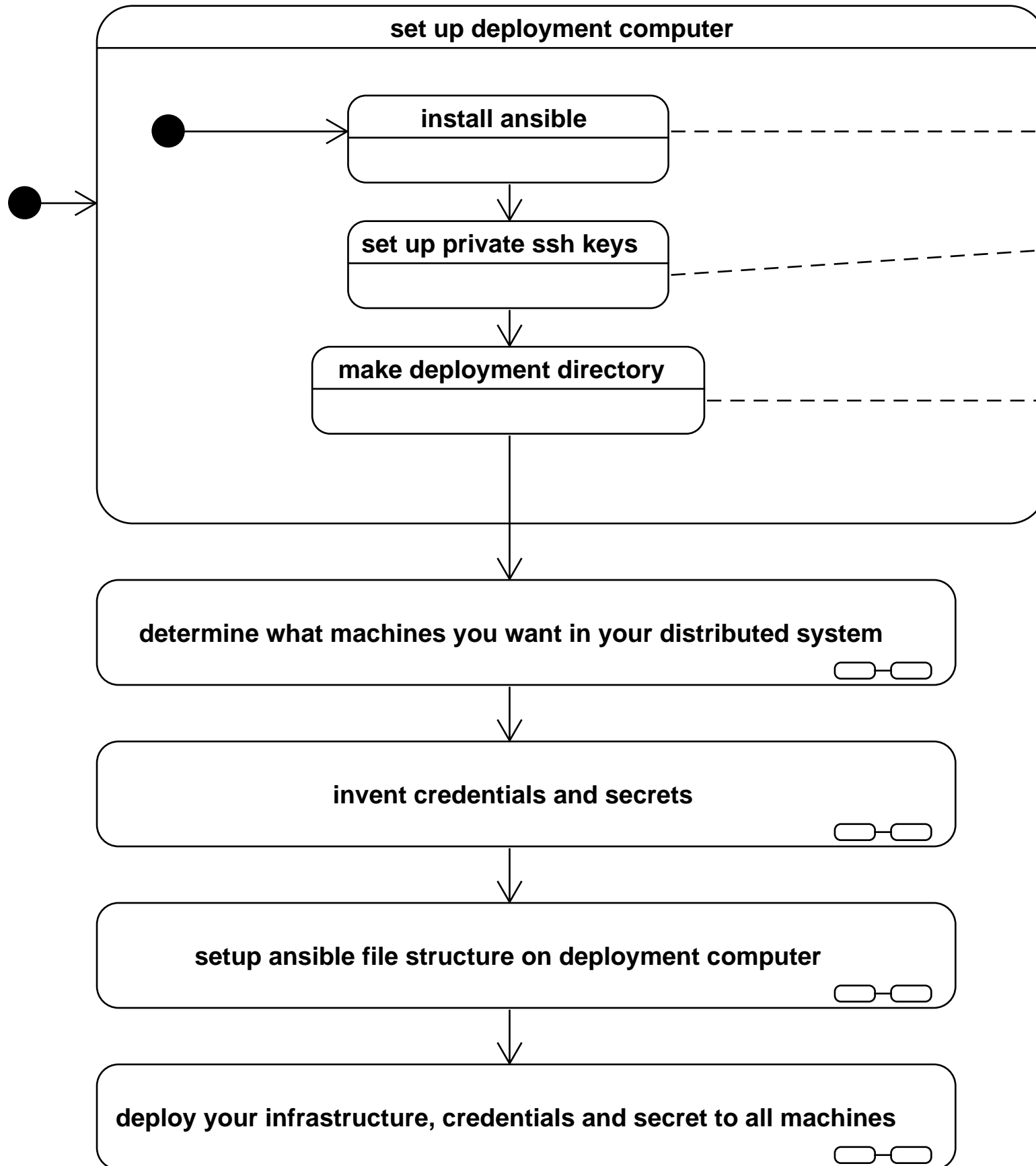


## WORKFLOW



## EXAMPLES

example of installing ansible:  
`sudo apt-get ansible`

example of setting local ssh keys:  
`$ sudo ssh-keygen`  
`$ sudo cat '~/.ssh/id_rsa.pub' » '~/.ssh/authorized_keys'`

example of setting deployment directory:  
`$ mkdir ~/miros_rabbitmq_deployment`