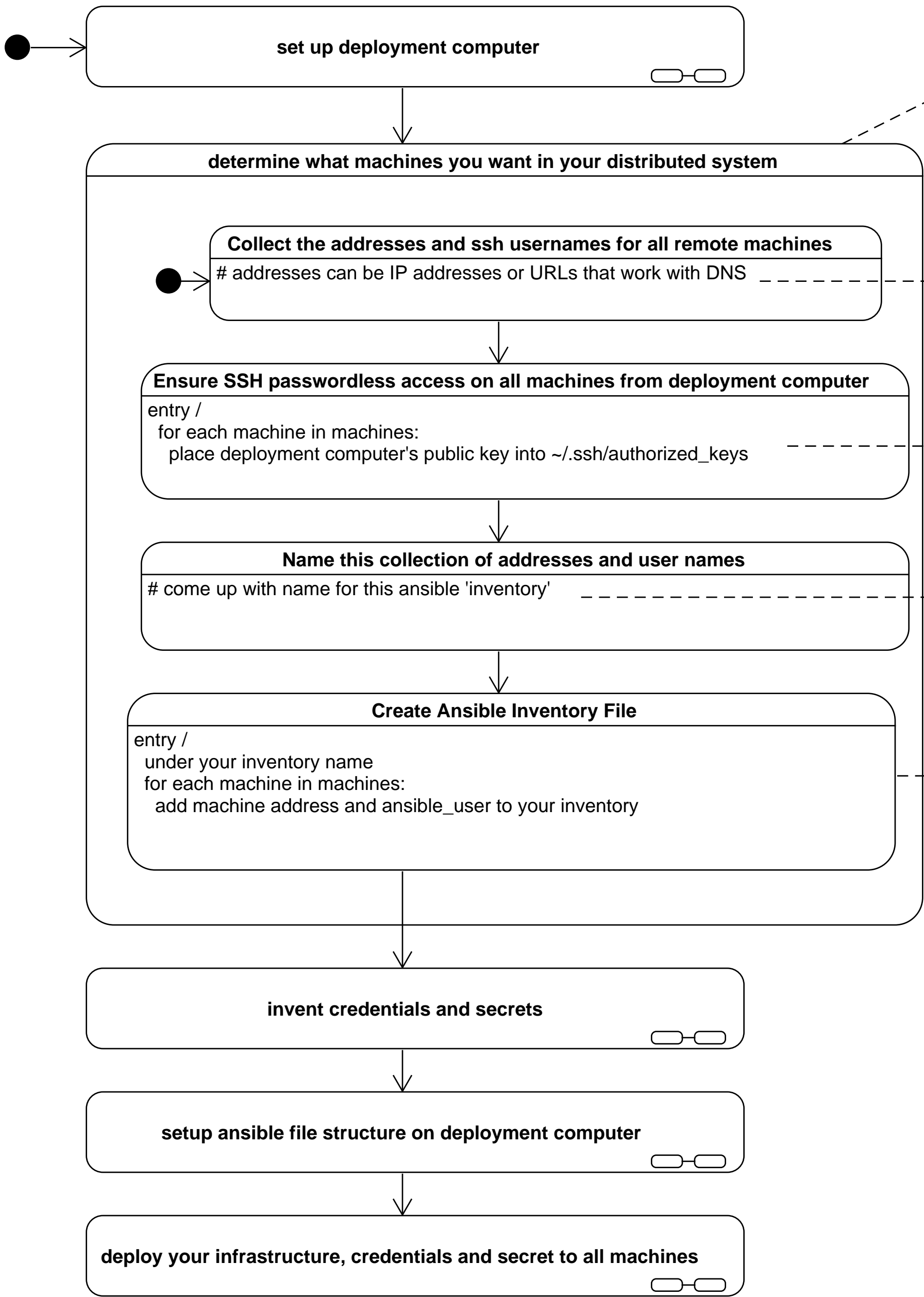


WORKFLOW



EXAMPLES

Assumption:
This procedure assumes sudo password the same on all machines in your distributed system

example:

machine	user
192.168.0.71	pi
192.168.0.169	pi

example:

```
cat ~/.ssh/id_rsa.pub | ssh pi@192.168.0.169 'cat » .ssh/authorized_keys'
```

example inventory name:
miros-rabbitmq

example inventory, on deployment machine in it's /etc/ansible/hosts:

```
[miros-rabbitmq]
192.168.0.71 ansible_user=pi
192.168.0.169 ansible_user=pi
```